

Технические характеристики

По вопросам продаж и поддержки обращайтесь:

Алматы (7273)495-231
Архангельск (8182)63-90-72
Астрахань (8512)99-46-04
Барнаул (3852)73-04-60
Белгород (4722)40-23-64
Брянск (4832)59-03-52
Владивосток (423)249-28-31
Волгоград (844)278-03-48
Вологда (8172)26-41-59
Воронеж (473)204-51-73
Екатеринбург (343)384-55-89
Иваново (4932)77-34-06
Ижевск (3412)26-03-58
Иркутск (395)279-98-46
Россия (495)268-04-70

Казань (843)206-01-48
Калининград (4012)72-03-81
Калуга (4842)92-23-67
Кемерово (3842)65-04-62
Киров (8332)68-02-04
Краснодар (861)203-40-90
Красноярск (391)204-63-61
Курск (4712)77-13-04
Липецк (4742)52-20-81
Магнитогорск (3519)55-03-13
Москва (495)268-04-70
Мурманск (8152)59-64-93
Набережные Челны (8552)20-53-41
Нижний Новгород (831)429-08-12
Киргизия (996)312-96-26-47

Новокузнецк (3843)20-46-81
Новосибирск (383)227-86-73
Омск (3812)21-46-40
Орел (4862)44-53-42
Оренбург (3532)37-68-04
Пенза (8412)22-31-16
Пермь (342)205-81-47
Ростов-на-Дону (863)308-18-15
Рязань (4912)46-61-64
Самара (846)206-03-16
Санкт-Петербург (812)309-46-40
Саратов (845)249-38-78
Севастополь (8692)22-31-93
Симферополь (3652)67-13-56
Казахстан (7172)727-132

Смоленск (4812)29-41-54
Сочи (862)225-72-31
Ставрополь (8652)20-65-13
Сургут (3462)77-98-35
Тверь (4822)63-31-35
Томск (3822)98-41-53
Тула (4872)74-02-29
Тюмень (3452)66-21-18
Ульяновск (8422)24-23-59
Уфа (347)229-48-12
Хабаровск (4212)92-98-04
Челябинск (351)202-03-61
Череповец (8202)49-02-64
Ярославль (4852)69-52-93



WRPB405 - Siphon Pump

Used for filling tanks in all models.



WRPK170 - Recoil Buckle

Recoil Assembly Buckle



WRPK165 - Rear Spacer Bolt (set of 4)

Used For; connecting rear spacer to rail. All wood models.



WRPK150 - Single Bungee Pod Set Only

Used For; Attaching Single Bungee to the Rear Spacer.
Used By: All Wood and S1 Models.

WRPK140 - Bungee D-Ring

Used For: Connecting Bungee hook to Recoil Belt. All Models.

**WRPK110 - Single Bungee Assembly**

Used For; Recoiling Recoil/Drive Strap. All Wood and S1 Models

**WRPH000 - 15" Handle Assembly**

Standard 15" (380mm) Handle Assembly with Velcro or Bolt-on Attachment Method. All S4 Wood, M1 and S1 Model.

**WRPB905 - Clip On Recoil Belt**

Clip On Recoil Belt. Used For; Connection Between the recoil bush (below the clutch) and the Bungee Hook. All models.





WRPB711 - 23mm Joint Connector Bolt (set of 4)

23mm (JCB) Joint Connector Bolt. Used for; Connecting Forward Riser Bracket and Footboard Bracket to Rails.



WRPB700 - Joint Connector Nut (Set of 4)

(JCN) Joint Connector Nut. Used For; Nuts for all Tie Rods and Nuts for Footboard and Forward Riser Bracket connection to Rails.



WRPB300 - Guide Pulley

Guide Pulley for Forward Riser and Tank Assembly. All models.



WRPB200 - Wood Bits Pack

Complete Bits Bag. Includes; 1 Set Dolley Wheel Assembly (WRPD100), 10 JCN/JCB Pairs, 2 Handle Rest/Bolt Pairs

WRPB100 - Spacer Set (set of 4)

Used For; Spacer Set for Seat and/or Forward Riser. Used By; All Models. Included; B100 Spacers (4)



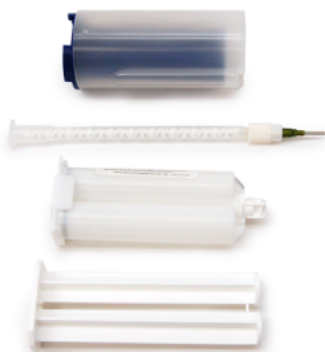
Rechargeable WaterPump

The Rechargeable WaterPump allows you to easily add and removal water during set-up, transport and basic maintenance. Designed for residential use



WRPD100 - Dolley Wheel Assembly

Used For; Dolley wheel for easing movement of machine. All models.



WRP003 - Tank Glue Kit

Tank Glue Kit and Applicator

WRPH1100- 17" Handle Assembly

17" Handle Assembly

Used For; Transmitting Power to the clutch and paddle
Used On; A1 Series and later M1 Models



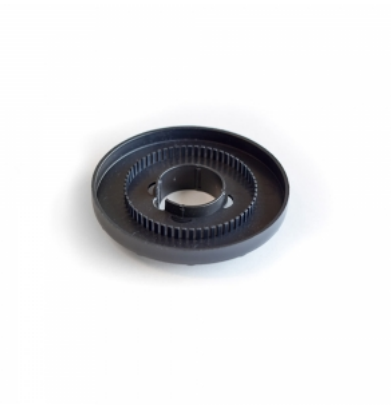
WRP855 - USB F to Mini USB Adapter

USB F to Micro USB Adapter

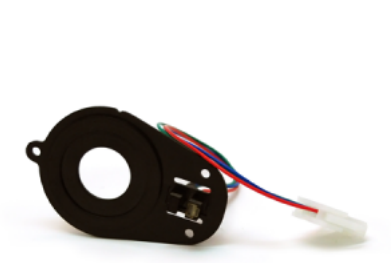


S4 Monitor

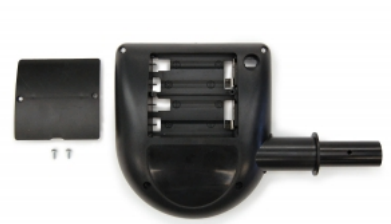
WRPC550 - S4 Sensor Disk



WRPC510 - S4 Sensor Assembly



WRPC110 - S4 Monitor Housing



WRPC025 - S4 Monitor Housing Screw Set



WRPC020 - S4 Monitor Facia Screw Set



WRPC015 - S4 Monitor Wiring Assembly



WRPC004 - S4 Monitor Board



WRP-C470 Monitor R-Clip





WRP-C475 Monitor Spigot Grip Ring



WRP-C465 S4 Monitor Compression Spring



WRPC004assy - S4 MONITOR Assembly

A1 Monitor



WRPC1230 - A1/GX-Home/Studio Monitor Sensor Disk



WRPC1005 - A1-Studio/Home Monitor Sensor



WRPC1000 A1 - A1 Monitor



WRPC1010 A1 - A1/GX-Studio/Home Monitor Screen Protector

A1 Pro Monitor



WRPC1230 - A1/GX-Home/Studio Monitor Sensor Disk



WRPC1005 - A1-Studio/Home Monitor Sensor



WRPC1010 A1 - A1/GX-Studio/Home Monitor Screen Protector



WRPC1000 A1 Pro - A1 Pro Monitor

Forward Riser

WRPF420 - Forward Riser Coach Bolt



WRPF410 - Forward Riser Bumper Set / A1 Sub Rail Bumpers



WRPF200 - Forward Riser Guide Pulley Set



WRPF100 - Forward Riser Pulley Assembly



WRPB400 - Bottom Bracket



Footboard



WRPP720 - Push Button Adjust Footpad Coverplate
For Retaining Push Button Adjust Footpads. All Wood Models, Push Button Adjust Footpad M1s, Push Button Adjust Footpad S1s.



WRPP715 - Push Button Adjust Footpad Footstrap

For Securing feet to the Footboard. All Wooden Models, All Push Button Adjust M1 Models, All Push Button Adjust S1 Models.



WRPP710 - Push Button Adjust Footpad Lockplate Set

For Locking Push Button Adjustment Footpad Set. All Wooden Models, All Push Button Adjust M1 Models, All Push Button Adjust S1 Models.



WRPP700 - Push Button Adjust Footpad Set

Push Button Adjustment Footpad Set. All Wooden Models, All Push Button Adjust M1 Models, All Push Button Adjust S1 Models.

WRPP500 - Footboard Bracket Bolt (set of 4)

For Fastening the Footboard Bracket to the Footboard. All Wood models.



WRPP455 - Handle Rest Bolt (set of 2)

For attaching Handle Rests to the Footboard/Tank Key Brackets. All Models.



WRPP430 - Handle Rest Set

For Attaching Footboard to the Tank Key Brackets. Supporting Handle when not in used. All models.



WRPP100 - Footboard Emblem

For Branding the Footboard. All Wood, GX M1 and S1 Models.





WRPB400 - Bottom Bracket

For connecting Footboard and/or Forward Riser to rails. All Wood Models and GX Series (Forward Riser Only).

Rail

WRPR310 - Rail Tank Protector Strip (set of 2)



WRPR200 - Rail Bumper set

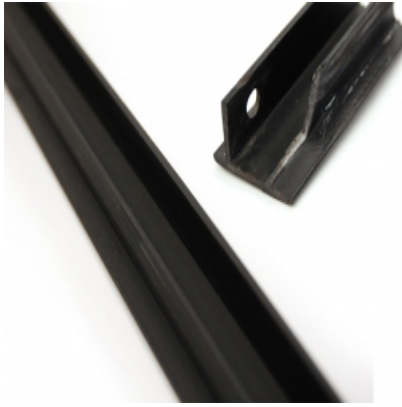


WRPR130 - Rail Stop Set



WRPR106 - Wooden Rail Rail Extrusion/Insert (1195mm/47") - Set of 2





**WRPR100 - Wooden Rail Rail Extrusions/Insert
(1080mm/42.5") - Set of 2**

Seat



WRPS350 - Load Wheel Washer Set



WRPS330 - Load Wheel Assembly



WRPS320 - Wheel Guard Set



WRPS100 - Seat Cushion

WRPS420 - Seat Guide Wheel Bolt (set of 4)



WRP-S000 - S4 Seat Assembly



Dual-Density ErgPad™



WRPS405 - Seat Guide Wheels (set of 4)



WRPS375 - Load Wheel E-Circlip Set



Tank



WRPB405 - Siphon Pump

Used for filling tanks in all models.



Rechargeable WaterPump

The Rechargeable WaterPump allows you to easily add and removal water during set-up, transport and basic maintenance. Designed for residential use



Short Tank Assembly with Clutch

S4 Short Tank Assembly with Clutch Used For; Contains Water and Generates Resistance Used By; All Models Includes; Sealed Tank Halves, Plastic Paddle with Shaft, Wooden Bottom Deck, Bottom Deck Inserts, Oilite Collar, Lower Oilite, Tank Grommet, Clutch Assembly Clutch Roll Pin



WRP003 - Tank Glue Kit

Tank Glue Kit and Applicator



WRPT760 - Tank Stopper

For Sealing the Tank/Tank Grommet. All Wood, GX, S1 and M1 Models.



WRPT111 - Tank Level Gauge Sticker

Gauging the level of water in the Tank. All Wood, S1 and M1 Models. The sticker can be placed right below the seam of the tank. We recommend all units to be filled to level 17 on the Level Gauge Sticker.



WRPT730 - Tie Rod Set

For Attaching the Forward Risers to the Top Deck and Bottom Deck. All Wood, GX and S1 Models.



WRPB710 - Top Deck 30mm Joint Connector Bolt (JCB)

Used For; Connecting Top Deck to Footboard Key Brackets ONLY. All Wood and GX Home/Studio Models

WRPH1100- 17" Handle Assembly

17" Handle Assembly

Used For; Transmitting Power to the clutch and paddle
Used On; A1 Series and later M1 Models



WRPT145 - Bolt on Plastic Housing Clutch

For Transferring Drive Strap movement to rotation in the
Paddle Shaft. All Wood and S1 Models, and M1 Models.



WRPT350 - Tank Guide Pulley Set

Guides the Drive Strap onto the Clutch and the Recoil Belt
onto the Recoil Bush. All models.



WRPT262 - Drive Strap Webbing H-Support

For Guiding the Drive Strap Webbing and retaining it on the
Clutch. All Wood, S1 and M1 Models.





WRPT230 - Recoil Bush Assembly and Shim (Metal Clutch Only)

For Attaching Recoil Belt to Clutch and rewinding the Drive Strap. All Wood, S1 and M1 Models. For Metal Clutch Only.



WRPT103 - Clutch Oilite Bearing Assembly (Plastic Clutch Only)

Guides and lubricates the paddle shaft. All Models. (Plastic Clutch Only)



WRPT102 - Top & Bottom Oilite Bearing Assembly

Guides and lubricates the paddle shaft. All Models.



WRPT510 - Tank Key Bracket Assembly- Left (Small)

For Attaching Bottom Deck, Top Deck and Footboard. All Wood, GX Models. NOTE- For M1 or S1 Models use WRPT510M1.

WRPT545 - Key Bracket Shoulder Cap Screw Set

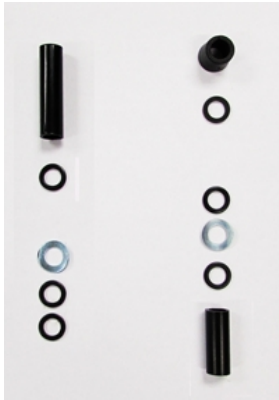
For Attaching the Key Brackets to the Bottom Deck. All Wood, GX, S1 and M1 Models.

**WRPT520 - Tank Key Bracket Assembly- Right (Large)**

For Attaching Bottom Deck, Top Deck and Footboard. All Wood, GX Models. NOTE- For M1 or S1 Models use WRPT520M1

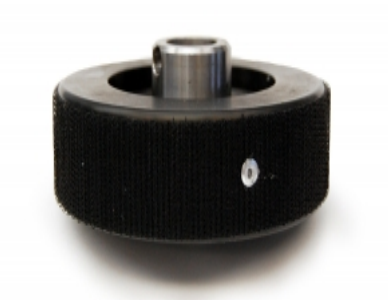
**WRPT340 - Tank Guide Pulley Spacer Set**

For Positions the Guide Pulleys on the Guide Pulley Shaft to ensure correct positioning. All Models.

**WRPT280 - Clutch Attachment Pin**

For Attaching the Clutch to the Paddle Shaft. All Wood, S1 and M1 Models.





WRPT150 - 4" Velcro Attachment Metal Clutch Assembly

For Transferring Drive Strap movement to rotation in the Paddle Shaft. All Wood and S1 Models, and Early M1 Models.



WRPT101 - Tank Filler Grommet

For sealing between Tank and Bottom Deck. Containing Rubber Tank Stopper. All Models



WRPH000 - 15" Handle Assembly

Standard 15" (380mm) Handle Assembly with Velcro or Bolt-on Attachment Method. All S4 Wood, M1 and S1 Model.

Slider Dynamic Parts



WRPS1100 - A1/GX Home/Studio Seat Cushion

For Seating. All A1/GX Series Models.



WRPP1700 - Dual Pin Adjust Footpad Set

For Holding and Adjusting Foot on Footboard. GX Home/Studio and Post 2010 M1 Models.



WRPB720 - M8 Button Head Bolt (4)

Back of Footboard Bolt



WRPD100 - Dolley Wheel Assembly

Used For; Dolley wheel for easing movement of machine.
All models.



Slider End Cap Screw #6x1.25\"/>

Used for: Attaching end caps to Slider Dynamic rails.

Included: 8 End Cap Screws.



M6x16 Button Head Cap Screw - OTB1060

Used for: Monitor bracket, attaching corner cover, and pulley axles.

Included: 6



Slider Flywheel Label - OTF 5080

Used for: Measuring Drag Factor on flywheel.

Includes: Sticker only.



Slider FW Cover Screw - OTB1050

Used for: Attaching the Flywheel Cover on the Slider Dynamic.

Included: 4 Screws.



M5x16 Button Head Cap Screw - OTB1051

Used for: Attaching front cover, monitor cover, rear cover, and bottom cover 3mm bolt.

Included: 8



M8x16 for Slider Dynamic - B725

Used for: Attaching rear cross member on SliderDynamic and for attaching rail brackets.

Included: M8x16 (4).



M5x16 Flat Phillips - OTB1052

Used for: Attaching the footpads to the footboard on the Slider Dynamic.

Includes (4).



SliderDynamic Bungee Eyelet - OTK1020

Used for securing the safety bungee.

Included 1



Safety Bungee - OTK1010

Used for: Centering the machine.

Included: 1 Safety Bungee.



Corner Cap - OTF1090

Used for: Standing machine up in storage position.

Included: 1



SliderDynamic* Rubber Feet - OTR3110

These Rubber replacement feet are ONLY for the SliderDynamic rower. These will not fit on any other rowing machine.

Used for: Slider Dynamic's legs, to prevent from moving on the floor and to protect the floor from metal feet.

Included: 2 Rubber Feet.



Level - OTR 3200

Used for: Leveling guide.

Included: 1



Rail Rubber Stoppers - OTR1070

Used for: Stopping seat and dynamic from hitting the end caps of the rails.

Includes 6 rail stoppers



Slider Wheel - OTR 1025

Used for: Sliding Dynamic Rail system and for rolling seat on rail.

Included: Wheel and bearings.

SLIDERDYNAMIC

SliderDynamic Rail Label - OTR 1040

Used for: Branding the Slider Dynamic Rails.

Included: Slider Dynamic Rail Stickers (2).



Slider Left and Right Top Rail End Cap LH

Used for: Left and right end caps for top rail of Slider Dynamic.

Includes: OTR1050 (1) & OTR1060(1) End caps.



Slider Base Rail End Caps

Used for: Left & Right Base Rail of Slider Dynamic.

Includes: OTR2020 (1) & OTR2030 (1).



SliderDynamic Handle Rest Holder - OTF 1070

Used for: Supporting handle when not in use.

Includes: Handle rest.



Slider Skid Bracket - OTR1090 revB

Used for: Guiding top rail set to the bottom rail set on the Slider Dynamic.

Includes 1 bracket.



Rail Lock Plate - OTR3040

Used for: Locking the top rail the base rail, for storage and transport of the Slider Dynamic.

Included: 1 Rail Lock Plate.



Slider Bungee - OTF3190

Used for: Recoiling chain Used on: Slider Dynamic.

Includes: Bungee.



Slider Foot Strap - OTP 1015

Used for: Securing the feet to the foot board.

Includes: 2x foot strap.Used for: Securing the feet to the foot board.

Includes: 2x foot strap.



Sensor - OTC 1060

Used for: Sensing movement of the magnets on the flywheel.

Includes: Sensor and cable.



SliderDynamic Chain - OTF3130

Used for: Replacing Slider Dynamic chain.

Includes: Chain with swivel.



Slider Flywheel Driveshaft - OTF3040 revB

Used for: Flywheel on Slider Dynamic.

Included 1



Slider Monitor - OTSPC 1000

Used for: Monitoring Performance (Split time, Distance,etc).

Included: Monitor board/LCD/Buttons, Housing.



WRPP1720-M1 - Dual Pin Adjust Cover Set

For Holding and Adjusting Footpad on Footboard. For S1 and Post 2010 M1 Models.

По вопросам продаж и поддержки обращайтесь:

Алматы (7273)495-231
Архангельск (8182)63-90-72
Астрахань (8512)99-46-04
Барнаул (3852)73-04-60
Белгород (4722)40-23-64
Брянск (4832)59-03-52
Владивосток (423)249-28-31
Волгоград (844)278-03-48
Вологда (8172)26-41-59
Воронеж (473)204-51-73
Екатеринбург (343)384-55-89
Иваново (4932)77-34-06
Ижевск (3412)26-03-58
Иркутск (395)279-98-46
Россия (495)268-04-70

Казань (843)206-01-48
Калининград (4012)72-03-81
Калуга (4842)92-23-67
Кемерово (3842)65-04-62
Киров (8332)68-02-04
Краснодар (861)203-40-90
Красноярск (391)204-63-61
Курск (4712)77-13-04
Липецк (4742)52-20-81
Магнитогорск (3519)55-03-13
Москва (495)268-04-70
Мурманск (8152)59-64-93
Набережные Челны (8552)20-53-41
Нижний Новгород (831)429-08-12
Киргизия (996)312-96-26-47

Новокузнецк (3843)20-46-81
Новосибирск (383)227-86-73
Омск (3812)21-46-40
Орел (4862)44-53-42
Оренбург (3532)37-68-04
Пенза (8412)22-31-16
Пермь (342)205-81-47
Ростов-на-Дону (863)308-18-15
Рязань (4912)46-61-64
Самара (846)206-03-16
Санкт-Петербург (812)309-46-40
Саратов (845)249-38-78
Севастополь (8692)22-31-93
Симферополь (3652)67-13-56
Казахстан (7172)727-132

Смоленск (4812)29-41-54
Сочи (862)225-72-31
Ставрополь (8652)20-65-13
Сургут (3462)77-98-35
Тверь (4822)63-31-35
Томск (3822)98-41-53
Тула (4872)74-02-29
Тюмень (3452)66-21-18
Ульяновск (8422)24-23-59
Уфа (347)229-48-12
Хабаровск (4212)92-98-04
Челябинск (351)202-03-61
Череповец (8202)49-02-64
Ярославль (4852)69-52-93